

NORTH CAROLINA LESBIAN, GAY, BISEXUAL & TRANSGENDER PRIDE 1997



The Economist

Bernie v Trump: an American night
Meet the EU's trade bruiser
Working nine to five
Digital twin of the heart

It's going global



GALE ACCELERATE



Our most flexible primary source package tailored to your institution's needs

ADAPTING TO SHIFTS IN RESEARCH AND INSTRUCTION

Consider the dramatic shifts you have experienced in the past few years. From moving to hybrid teaching models to struggling with student retention and restricted budgets, there's no aspect of higher education that has gone untouched. Now, current challenges have uncovered new opportunities.

Gale Accelerate is a program for acquiring primary sources at scale that resulted from conversations with academic libraries that needed to adapt to the dramatic shifts in instruction and research. Beginning with library budgets and the pressures that come with them, this flexible program ensures that your library acquisition goals can remain a priority year to year. The digital resources and tools available with this program can support student outcomes, help researchers generate more original research, and prepare instructors for innovative approaches in teaching. With *Gale Accelerate*, you can strengthen your library's reputation as a destination for research and help to attract high-caliber staff and students in an increasingly competitive landscape.

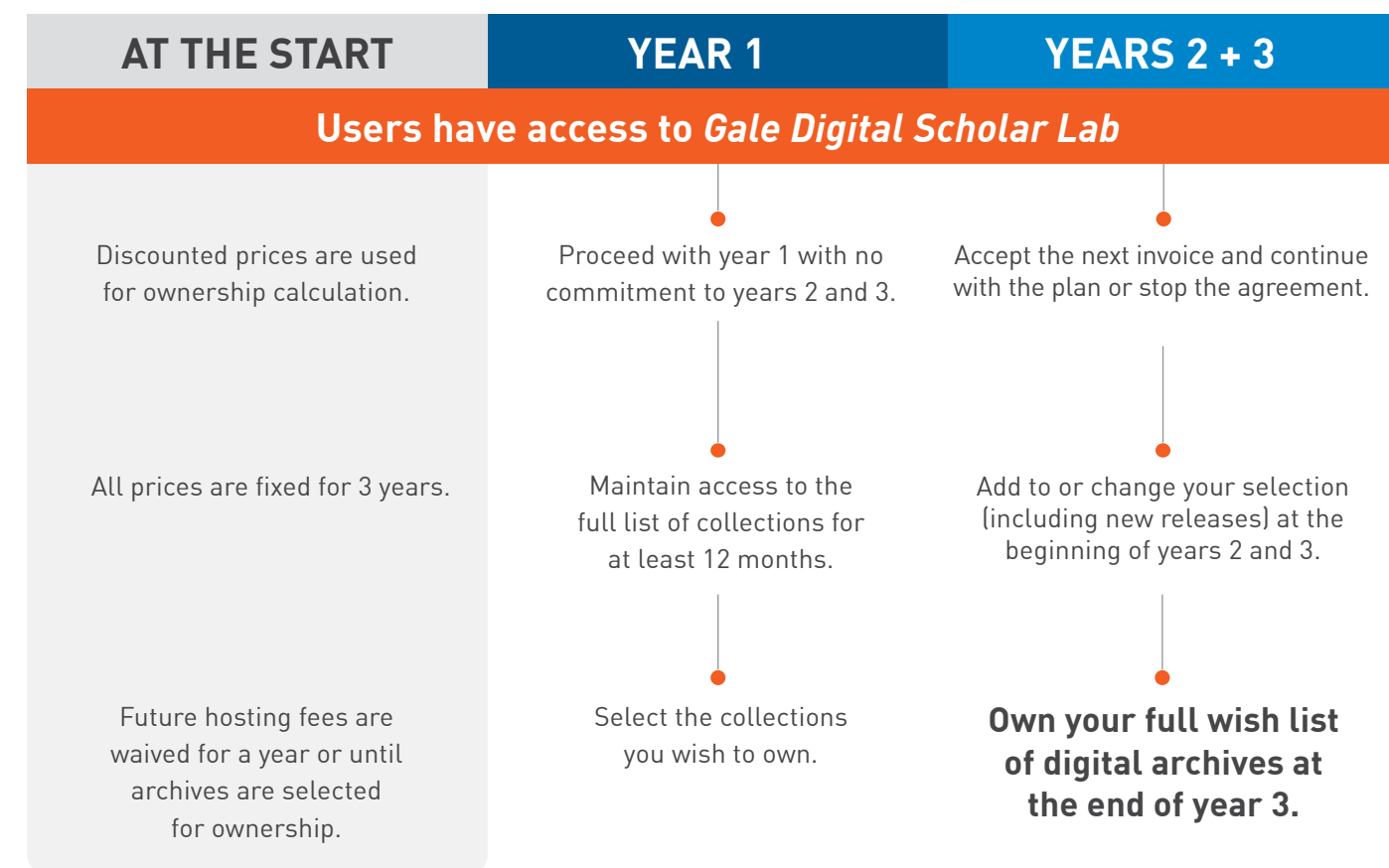
MEASURABLE BENEFITS

15 | Average number of **new archives** you will gain

16.5 MILLION | Average number of **digital primary source pages** you will add to your library's offering

THE GALE ACCELERATE FRAMEWORK DEFINED

With this program, you have the opportunity to purchase your academic institution's wish list of world-class digital archives at a discounted price over the course of three years. At the end of each year, you can opt out or change your selection of archives to suit your specific needs.



EXPLORE BENEFITS FOR YOUR LIBRARY

ACCELERATE ACQUISITION

Increasing your digital offering helps you deliver critical support for research and instruction. With *Gale Accelerate*, you can accomplish your acquisition goals quickly and cost-effectively while addressing common challenges libraries face today.

DIGITAL HOLDINGS

Libraries need to offer more digital resources in a post-COVID-19 world.



INSTANT ACCESS

Gain instant access to **millions of pages** of primary source content.

LIMITED BUDGETS

Due to financial limitations, it takes a long time to obtain a critical mass of collections.



AFFORDABLE PRICING

Purchase content for the **best possible price**.

UNCERTAINTY

It's difficult to secure a budget.



FLEXIBILITY

No commitments are required beyond year 1.

MAKE ALTERATIONS AS NEEDED

Gale Accelerate offers a single reduced price across multiple archives, spread over yearly payments. You can change the selection of archives at the start of each year, and increase or decrease the quantity as needed. Gale archives provide you with usage statistics, so you can make evidence-based alterations, ensuring users have access to the archives they need most.

COLLABORATE MORE EFFECTIVELY

Your Gale representative will work with you to create a list suited to your users and can help with your business case. As the archives are interdisciplinary, the selection can support multiple subject areas and avoid any need to prioritize departments or faculties in your spending. *Gale Accelerate* doesn't stop with access to archives; it includes a post-purchase support package. The support is tailored to you and delivered when you need it. This package helps you raise awareness of the archives you have and ensures your users can use them efficiently and effectively.



STRENGTHEN YOUR REPUTATION FOR RESEARCH EXCELLENCE



Increasing the quality and quantity of research can be challenging. A large collection of digital resources can help researchers create original research, fast.

A major obstacle for researchers is the lack of access to primary source material. Travel and budget restrictions limit projects. Providing a broader, more diverse range of research material offers several advantages. It helps to support career ambitions, keep valuable staff, and establishes your institution's library as a destination for research.

CREATE OPPORTUNITIES FOR INNOVATION

For research to stand out, it needs to be innovative. *Gale Accelerate* provides a large collection of rare and otherwise inaccessible material. Researchers can add new content to existing debates or cover new ground. Access to a larger collection increases the scope and depth of research projects and helps researchers build credibility by generating world-class research. Producing high-quality, innovative work impacts a researcher's career. Publication can improve career progression, and publishing opportunities can increase for projects that add new dimensions to existing debates or generate new research in understudied areas.

SUPPORT EFFICIENT RESEARCH

Search technology streamlines research, delivering better results, quicker. Conducting research can be time consuming, especially when there's a high volume of documents available. Many Gale archives are cross-searchable and contain advanced search tools. These tools help to focus the results on relevant content, using a broad range of search techniques. Researchers don't need to work through lists of results in the hope of finding something useful. To make life easier, many archives integrate with workflow tools, including G-Suite and Microsoft Office.

GALE DIGITAL SCHOLAR LAB

As an added benefit to the *Gale Accelerate* program, users have complete access to *Gale Digital Scholar Lab*, our groundbreaking digital humanities tool that fosters scholarship through the use of natural language processing for historical texts.



BUILT FOR RESEARCH

Gale Digital Scholar Lab is a text- and data-mining tool built specifically to analyze primary sources and makes the management of large quantities of documents quick and efficient. Researchers create flexible content sets that they can then access and refine anywhere, anytime. As a result, researchers don't need to compromise on other responsibilities.

ACCESSIBLE FOR TEACHING AND LEARNING

In *Gale Digital Scholar Lab*, tools support broad and focused searches across archives. Instructors can find sources for their classes and analyze content in a single platform. Designed to enhance both classroom-based teaching and remote work, *Gale Digital Scholar Lab* helps humanities students develop transferable digital skills that appeal to future employers. Plus, it can be used as a tool for developing group projects.

MEET STUDENTS WHERE THEY ARE



UNDERSTAND CURRENT EXPECTATIONS

Student surveys have identified trends that affect both their choice of university and what they expect from them.

73%

of Students Prefer Some Courses Be Fully Online Post-Pandemic¹

68%

of Students Strongly or Somewhat Agreed That They Would Like to See Greater Use of Technology for In-Person Courses¹

67%

of Students Indicated They Would Like to See an Increase in Usage of Digital Materials and Resources¹

58%

of Students Reported Using Digital Materials More Last Year²

ATTRACT AND RETAIN STUDENTS WITH ADDED DIGITAL OFFERINGS

Show your commitment to students' experiences and learning outcomes. With *Gale Accelerate*, you can prove that their digital experience isn't just a "nice to have" option but a priority. The inclusion of a multiyear service plan offers two benefits: it increases awareness of your available archives and helps students get the most out of them.

DISCOVER THE BENEFITS OF GALE PRIMARY SOURCES

Gale Primary Sources makes it possible for students to uncover original historical documents, meticulously cross-referenced, to bring facts into focus. *Gale Accelerate* adds millions of documents from archives and collections within *Gale Primary Sources* that faculty can integrate into their courses easily. This allows instructors to deliver blended learning with confidence and helps to expand the scope of existing courses and create new ones—all with minimal added workload. Search tools and learning management system (LMS) integrations both help to save time.

Archives provides students with diverse, multicultural content that addresses important issues within and beyond academia. The volume of content supports students in building information literacy and self-management skills. Students learn how to manage their time and effort in the research process, and the diversity of material helps them develop critical-thinking skills and cultural awareness. The combination of scale and diversity encourages students to debate multiple viewpoints, question existing narratives, and construct their own ideas and arguments.

Select archives contain Learning Centers based on the *Guidelines for Primary Source Literacy*, developed by ACRL and SAA.

Conceptualize

Topic Overviews

Sample Searches

Find

Essays by Subject Experts

Read

Step-by-Step Search Strategies

Use

Case Studies

Discussion Questions

 **ACRL** Advancing learning
Transforming scholarship.
Association of College & Research Libraries

 **SOCIETY OF
American
Archivists**

RECEIVE POST-PURCHASE SUPPORT

You and your staff will receive ongoing support to help you increase awareness and usage of the archives and resources available through *Gale Accelerate*. All of these support services can be arranged at a time that suits you. Connect with your Gale representative to discuss your institution's needs and goals.

FRONT-OF-CLASS SESSIONS

These sessions give users at all levels the opportunity to learn how to get the most from the *Gale Primary Sources* platform. We give users, whether a few individuals or a few hundred, a tour of the core features and functionality of the *Gale Primary Sources* platform that can improve their learning and research.

DISSERTATION SUPPORT

Drop-in dissertation support gives students the chance to receive personal guidance on how to find relevant primary source material. It's simple: users bring their topics, get their sources, and go.

PRODUCT TRAINING

Stay informed with product updates and tips on how you and your users can get the most from our archives and the *Gale Primary Sources* platform. We offer annual product trainings, led by our dedicated trainer, for all of your stakeholders who want to learn more about the full range of your Gale archives.



RECURRING

Attend annual trainings as part of your *Gale Accelerate* subscription.



COMPREHENSIVE

Training content is designed to support librarians, faculty, and students.



SPECIFIC

Sessions can be tailored to subject areas and specializations.

USER EXPERIENCE

USER AWARENESS

PROMOTIONAL RESOURCES

We supply a package of resources to help you promote new archives. You will receive posters, postcards, bookmarks, and downloadable digital assets for announcements and a range of social media channels.

STUDENT AMBASSADOR PROGRAM

Gale will train a student from your institution to help increase usage of *Gale Primary Sources* among their peers.³ We have had Gale Ambassadors at a number of institutions over previous years, and received feedback and survey results showing them to be a significant source of driving awareness among fellow students.



CREATE AWARENESS

A student ambassador can use their knowledge to make sure students know which archives are available and how to find them.



INCREASE USAGE

Peer-to-peer communications are proven to be more effective in getting students to take advantage of their library's archives.



PROMOTE UNDERSTANDING

Ultimately, this program helps students use archives more effectively, which leads to improved student outcomes.

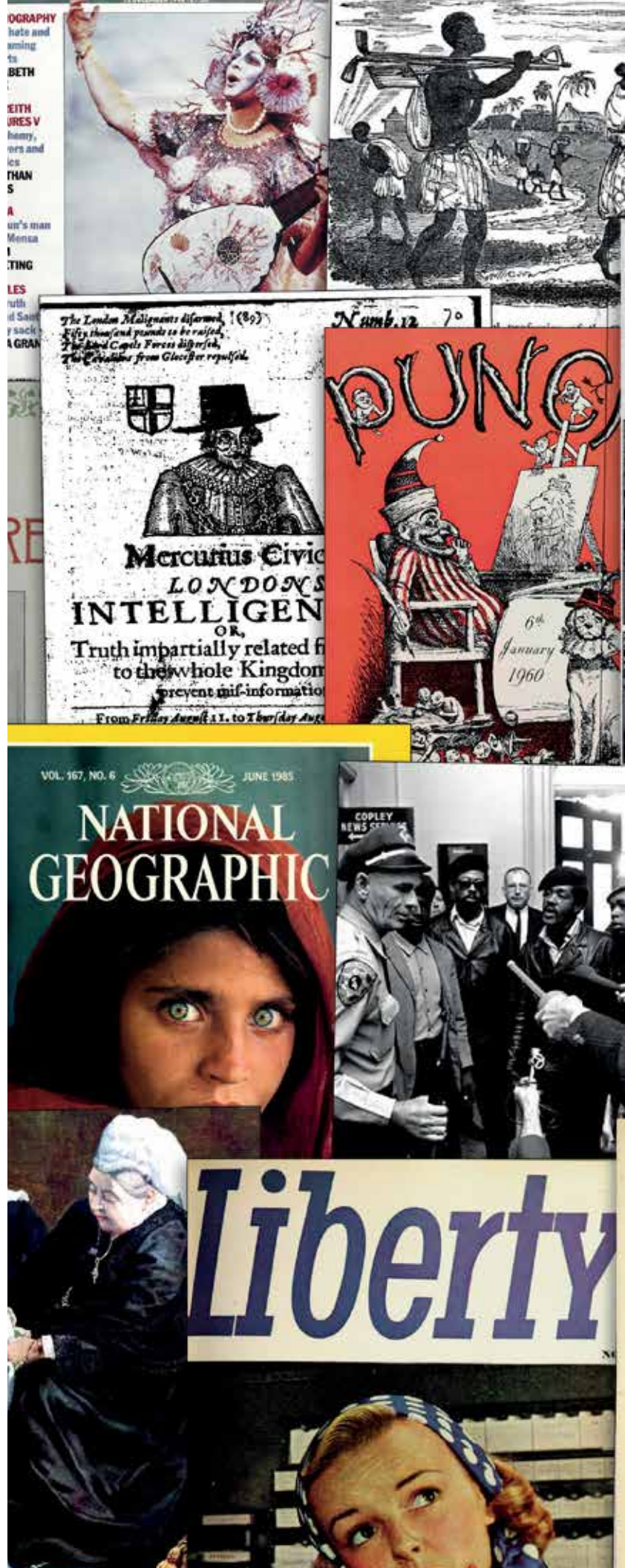




Get instant access to a unique custom package of multidisciplinary digital primary source archives and support services built around the needs of your users.



Contact me directly for more information.



1. Results are from the Digital Learning Pulse Survey 2021, conducted by Cengage Group.
2. Research derived from the OnCampus Research 2021 report, *Student Watch™: Attitudes & Behaviors toward Course Materials*.
3. Available for select accounts based on need.